

SECUREDORR.COM  
REMOVABLE CENTER BRACE

FIXED BRACING  
2x4'S (TREATED) ALIGNED VERTICALLY  
SCREWED TO CONCRETE & BOLTED TO DOOR

**ATTIC VENTILLATION:**  
1 SQ FT OF VENTILATION  
PER 150 SQ FT OF ATTIC (SOME SAY 1/300)  
(50% IN RIDGE, 50% IN SOFFETS)

EXAMPLE: 1700 SQ FT  
/ 150 = 1632 SQ IN. VENTING  
816 SQ IN. (RIDGE VENT)  
816 SQ IN. (SOFFET VENTS)

SOFFIT VENTS: 7-8 SQ IN. PER LINEAR FOOT TYPICAL  
6' TILES- MAYBE 50 IN THE HOUSE  
THAT'S 25' LINEAR FT -> 200 SQ IN VENTING  
THAT STINKS

GOOD RIDGE VENTS HAVE 18 SQ IN. PER LINEAR FT  
THAT MEANS I NEED 45 LINEAR FEET?  
45 X 18 = 810 SQ IN.

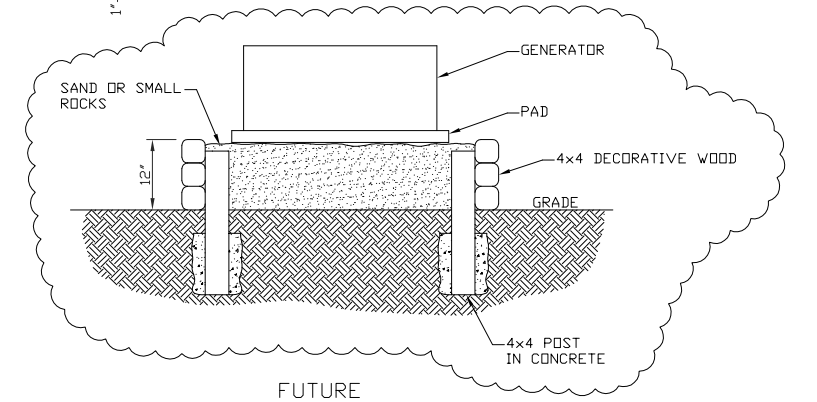
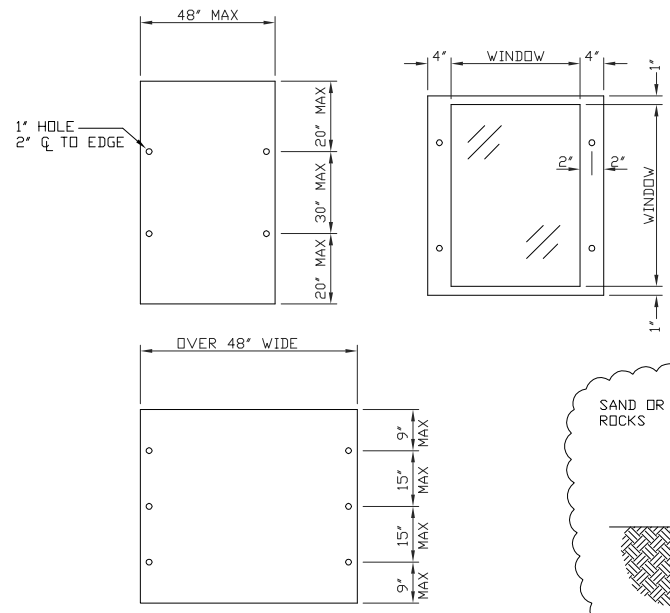
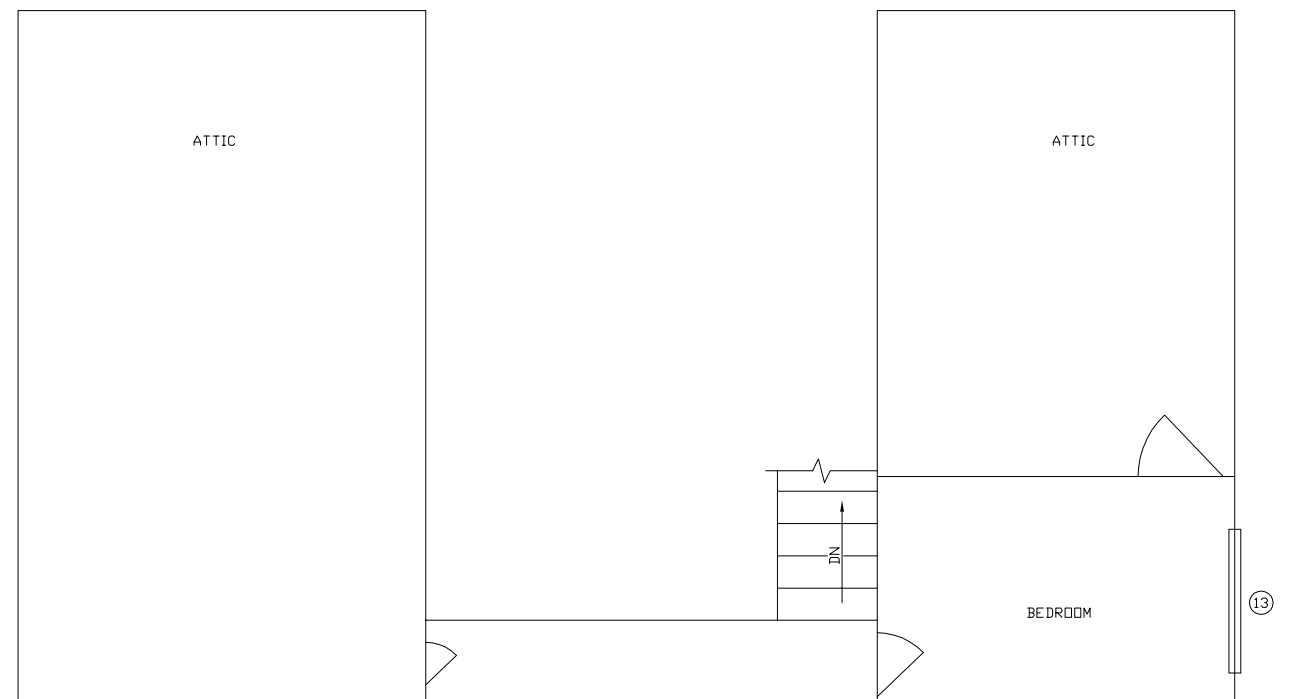
TORNADO PROTECTION: UP TO 3X MORE RIDGE VENT AREA  
THAN SOFFIT VENT - ALLOWS ATTIC PRESSURE TO VENT  
WHEN TORNADO TRIES TO SUCK THE ROOF OFF

REMOVE THE AIR HAWKS (VENTS ON SIDE OF ROOF)  
WILL SHORT-CIRCUIT THE RIDGE VENT FLOW

**WINDOW SCHEDULE:**

WINDOW	WIDTH	HEIGHT	BOARD WIDTH	BOARD HEIGHT	CLAMPS
1	33.5	46	41.5	48	4
2	45.5	46	53.5	48	6
3	33.5	46	41.5	48	4
4	33.5	34	41.5	36	4
5	33.5	34	41.5	36	4
6	33.5	20.5	41.5	21	4 (CONC)
7	70	45	78	46	6 (CONC)
8 & 9	85.5	70	93.5	36 + 36 (2 BOARDS)	6 + 6
10	57.5	44.5	65.5	46	6 (CONC)
11	33.5	20.5	41.5	21	4 (CONC)
12	57.5	45.7	65.5	45	6 (CONC)
13	59	46	67	48	6
14	46.5	34	54.5	36	6

STANDARD CLAMPS: 46 with 4 1/4" bolts  
CONCRETE CLAMPS: 26 (SCREW LENGTH ??)



HURRICANE PREP 2006  
(NOT TO SCALE)